

Table of Contents

Chapter 1 Introduction	1
System Requirements	2
Chapter 2 Introducing the AVerTV Application	3
Launching the AVerTV Hybrid + FM Cardbus Application.....	3
Running AVerTV Hybrid + FM Cardbus application at the first time	4
Introducing the User Interface	6
The Control Panel.....	7
Remote Control.....	9
Resizing the TV Monitor Window.....	11
Always on Top	11
Setting for Windows® Power Option	11
Chapter 3 TV.....	13
Scanning Channels.....	13
Scanning Channels (For Advanced User)	16
Adding and Deleting Channel Groups	17
Selecting a TV/Radio Channel.....	19
Adjusting Volume	20
Specifying a Channel Name or Description	20
Modifying a program list name.....	21
Removing Unwanted Channels	22
Using the OverScan Function	23
16-Channel Preview.....	24
Customize Video recording Setting	25
Using the EPG Function	29
Fine tuning Color and Display Quality	30

Chapter 4 FM Radio	32
FM Radio Controls	32
How to Auto Scan FM Radio Channels	32
Manually Scanning Specific FM Channels	33
Selecting a Channel.....	34
Skipping Unwanted Channels.....	34
Adding a Radio Frequency	35
Modifying a Radio Name	35
Setting the Audio Mode	36
Adding and Deleting Channel Groups	36
Customizing Audio Recording Settings	37
Chapter 5 TimeShift	39
TimeShift Controls	39
Customizing TimeShift Settings.....	39
Using the TimeShift Function.....	40
Chapter 6 DVR	42
DVR Controls	42
Recording Settings.....	42
Using the Recording Function	43
Playing the Recorded Programs.....	43
Chapter 7 Image Capture.....	45
Before Capturing.....	45
Capturing a TV/ Video Image	45
Multiple Image Sequence Capture	48
Chapter 8 Teletext.....	50
Overview	50
Toolbar Buttons.....	51

LED Lamp	52
Using Teletext	53
Chapter 9 Schedule	56
Adding Schedules	57
Chapter 10 Hot Keys	60
Chapter 11 Customer Service.....	62



CHAPTER 1 INTRODUCTION

Now, with *AVerMedia® AVerTV Hybrid + FM Cardbus*, you can experience both analog and digital TV, listen to the FM radio and other features on your PC. Convert your computer system into a real multimedia entertainment center.

Surely, you'll never miss your favorite ball games, soaps or game shows anymore because the Time Shift function performs background recording of a TV program and lets you return and watch from the part of the program where you left off.

To enjoy high quality digital programs, *AVerMedia® AVerTV Hybrid + FM Cardbus* is your best choice.

System Requirements

System requirements are described in detail below. Before using AVerTV Hybrid + FM Cardbus, verify that your PC meets the described requirements.

To watch Analog TV:

- Intel Pentium 4 2.4GHz (Hyper-Threading) for Time Shift and Record in MPEG2
- 128MB RAM or higher
- PCMCIA cardbus slot
- VGA card supports DirectX 9
- Sound card
- Windows 2000 / XP

To watch HDTV/SDTV:

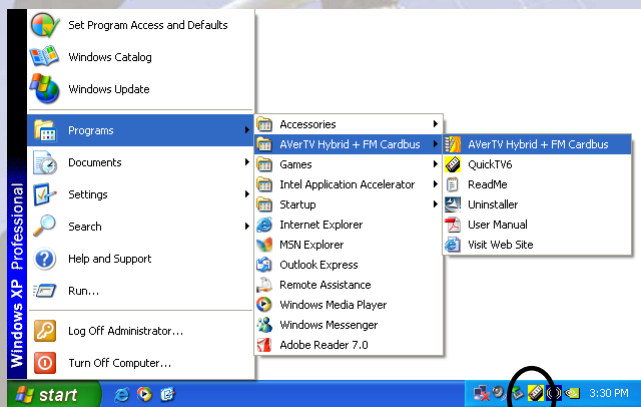
- Pentium 4 2.4 GHz
- 256 MB RAM or higher
- PCMCIA cardbus slot
- VGA card supports DirectX 9 and DxVA (HDTV)
- Sound card
- Windows 2000 / XP

CHAPTER 2 INTRODUCING THE AVerTV Application

The AVerTV Hybrid + FM Cardbus application allows you to watch digital and analog TV, listen to the radio, record programs, and capture still images while you work on your computer.


Launching the AVerTV Hybrid + FM Cardbus Application

Run the AVerTV Hybrid + FM Cardbus application from the Programs menu.



Quick TV Launcher

To run the application, click **Start**, point to **Programs**, choose **AVerTV Hybrid + FM Cardbus**, and then click **AVerTV Hybrid + FM Cardbus**. Another way is to double-click the

AVerTV Hybrid + FM Cardbus program icon “” on the

desktop. Or, you can double-click the **Quick TV** launcher located at the lower right corner of the screen.

☒ **Note:** **Quick TV** launcher is important for both of the remote control and the **Schedule**. If it is not activated, the remote control feature is automatically disabled and the **Schedule** will not perform any preset schedules (if any).

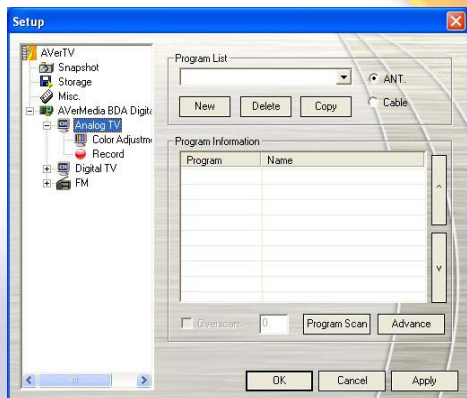
Running AVerTV Hybrid + FM Cardbus application at the first time

If this is your first time to run the application, the *Setup* dialog box will appear to prompt you to scan channels. (For details, please refer to the section *Scanning Channels*)

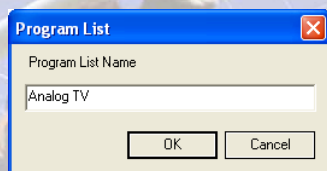
1. Choose your favorable signal input (Digital TV, Analog TV or FM Radio) on the left pane of the *Setup* dialog box.

☒ **Note:** Before choosing the signal input, please make sure that your country/region is correct. For more information, please refer to the section titled *“Scanning Channels” in Chapter 3*.

2. Then you need to select the **Ant.** option to search only for air channels, or select **Cable** to scan for cable channels if your choice is “Analog TV” in step 1.



3. Click **New** and the *Program List* dialog box will appear. Type in the desirable name and click **OK**.



4. Click **Program Scan** for searching for available channels/programs in your area.
5. After scanning, the active TV channels will be listed inside the box. Click **Apply** to save the scanned channels.
6. To exit the current dialog box, click **OK**.
7. If you choose “Digital TV” in step 1, select **Digital TV** to scan for digital TV channels or select **Digital Radio** (Note: We can only access to DVB-T Radio Broadcast, not Digital Audio Broadcast system.) search for digital radio broadcasts.
8. Repeat step 3 to 6 to complete the digital TV/Radio scanning.
9. To scan FM radio channels, choose “FM” in step 1.

10. Click **New** and the *Program List* dialog box will appear. Type in the desirable name and click **OK**.
11. Click **Scan**. All active channels will be automatically scanned and memorized. To terminate the scanning, click **Stop**.
12. Click **Apply** to save the new setting and click **OK** to exit the current dialog box.

Introducing the User Interface

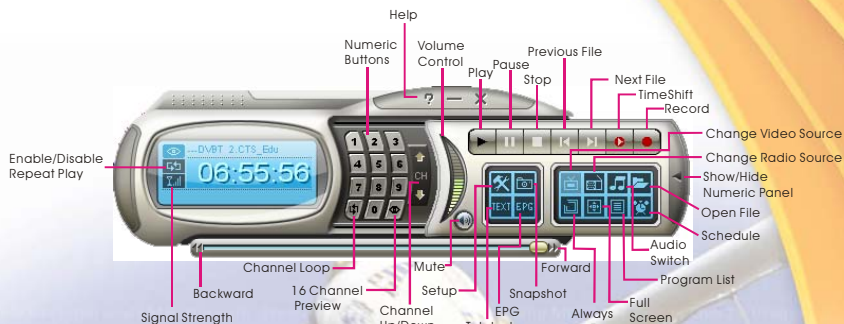
The **TV monitor** allows you to watch live TV or video.



The **Control Panel** provides button controls for selecting channels, adjusting volume, capturing images, and more. It has a panel display that shows the current channel number and channel name.

To display or hide the **Control Panel**, click the button  located at the lower left corner of the TV Monitor.

The Control Panel



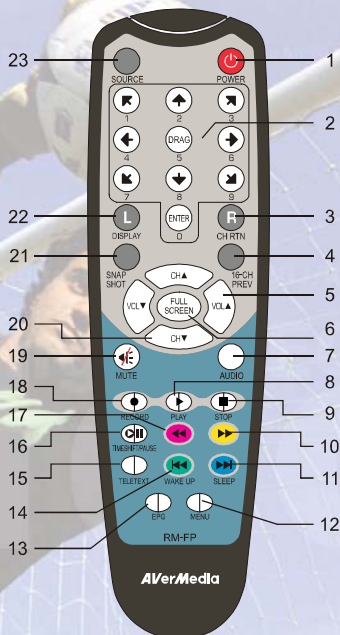
The table below describes functions of the buttons on the Control Panel.

BUTTON	FUNCTION	BUTTON	FUNCTION
Enable/Disable Repeat Play	Continuously play back the files in the playlist.	Signal Strength	Display signal strength.
Backward	Move backward in intervals.	Channel Loop	Return to previously accessed channel.
16 Channel Preview	Display 16 consecutive TV channels on the TV Monitor window.	Channel Up/Down	Go to the next upper or lower active channel.
Mute	Turn off the sound.	Setup	Allows you to: * Configure digital TV, analog TV, and FM radio settings. * Set for Windows power option. *Configure snapshot settings. *Customize recording settings. *Customize the Time Shift function.
Teletext	View Teletext information	EPG	View EPG information.
Snapshot	Capture a single image or a sequence of images.	Forward	Skip forward in intervals.

Always on Top	Make TV monitor float over the top of other program windows.	Full Screen	Show TV/Radio programs in full screen.
Program List	Display the program list.	Audio Switch	Choose between available languages.
Schedule	Display Schedule dialog box.	Open File	Create a playlist of video files to playback.
Show/Hide Numeric Panel	Toggle between displaying or hiding the Numeric Panel.	Change Radio Source	Switch between FM radio and DVB-T radio. (Only access to DVB-T Radio Broadcast , not Digital Audio Broadcast system.)
Change Video Source	Switch between analog TV, digital TV, composite or S-video.	Record	Record the current TV show.
TimeShift	Performs background recording of the live TV program. This function lets you view the recorded parts, while at the same time, recording is in progress.	Next File	Play the next file in the playlist.
Previous File	Play the previous file in the playlist.	Stop	Stop the playback, recording, Time Shift, etc.
Pause	Freeze the playback temporarily.	Play	Play back recorded video files.
Volume Control	Drag your mouse up/down to increase/decrease the volume level.	Help	View User's Manual.
Numeric Buttons	Select channels/programs.		

Remote Control

You can use remote control to turn on/off the programs, select channels, adjust volume and so on. In addition, the remote control can function as a Remote Mouse by using the arrow keys ($\leftarrow \uparrow \rightarrow \downarrow \swarrow \searrow \nearrow \nwarrow$) to control the mouse pointer when the software is closed. Please be notice that you have to activate Quick TV



Button	Description
1. Power	Turn on/off the application
2. Numeric Buttons	- Select a TV channel. - Under the 16-channel preview mode, use $\uparrow \downarrow \leftarrow \rightarrow$ to highlight the intended channel.
3. CH RTN	Go to the previously selected channel.
4. 16-CH PREV	16-channel Preview.
5. VOL ▲/▼	Increase/decrease the volume.

6. FULL SCREEN	Display TV in full screen.
7. AUDIO	Switch between available languages.
8. ► (Play)	Play the last recorded or played file.
9. ■ (Stop)	<ul style="list-style-type: none"> - End the Playback or recording. - End the Time Shift mode and return to real-time TV or Radio mode.
10. ►► (Forward)	<ul style="list-style-type: none"> - Advance the playback. - Jump to the teletext page of the corresponding color according to this button.
11. SLEEP ►►	<ul style="list-style-type: none"> - Go to the next file in the playlist. - Set the time to put your computer in Standby or Hibernate mode. - Jump to the teletext page of the corresponding color according to this button.
12. MENU	Display or hide the Control Panel .
13. EPG	Launch the Electronic Programme Guide.
14. WAKE UP ◄◄	<ul style="list-style-type: none"> - Go to the previous file in the playlist. - Set the time to bring your computer out of Standby or Hibernate mode. - Jump to the teletext page of the corresponding color according to this button.
15. TELETEXT	Launch the Teletext application.
16. TIMESHIFT /PAUSE	<ul style="list-style-type: none"> - Freeze the playback. - Switch from real-time TV or Radio to Time Shift mode.
17. ◄◄ (Rewind)	<ul style="list-style-type: none"> - Rewind the playback. - Jump to the teletext page of the corresponding color according to this button.
18. ● (Record)	Switch to DVR mode and record the current program or video into your hard drive.
19. MUTE	Turn on/off the sound.
20. CH ▲/▼	Go up or down to the next active channel.
21. SNAPSHOT	Capture the on-screen image to a bitmap file.
22. DISPLAY	Display information.
23. Source	Switch between available signal source.

Resizing the TV Monitor Window

To enlarge or reduce the size of the TV Monitor window, click and drag the lower right edge of the window.

Double-click the TV Monitor window to display it in full screen or click the Full Screen button  on the Control Panel.

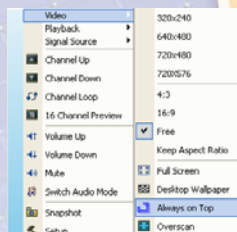
When in full screen mode, just double-click anywhere on the screen to revert to the normal TV window size.

Always on Top

To make the TV monitor window float over the top of other program windows, right-click on the TV monitor. In the pop-up menu, point to Video and choose Always on Top.

OR,

Click the **Always on Top** button  on the Control Panel.



Setting for Windows® Power Option


This option allows you to put your computer in Standby or Hibernate mode while you are away from the computer.

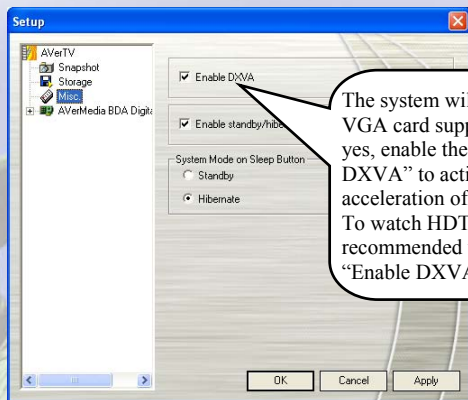
Note:

Standby: Standby is a state in which your monitor and hard disks turn off, so that your computer uses less power.

Hibernate: Hibernation is a state in which your computer shuts down to save power but first saves everything in memory on your hard disk.

Please do the following:

1. First, Click the **Setup** button  and in the *Setup* dialog box, click **Misc.** icon on the left pane.
2. By default, the system is set to enable the *Standby/Hibernation* option. What you have to do is to choose the desired power-saving settings. If your computer has problem with being out of Standby or Hibernate mode, please clear the *Standby/Hibernation* option.



3. By pressing the **Sleep** button repeatedly on the remote control, you can set the time to bring the computer into Standby or Hibernation.

The time setting will be displayed on the TV monitor. For details, please see the description below.

Time setting mode	Description
Sleep 30/60/90/120 Minute(s)	Your computer will go into Standby or Hibernate mode in 30/60/90/120 minutes.
Sleep	Your computer will go into Standby or Hibernate mode in about 10 seconds.
Channel Name/No.	Your computer will return to original settings.

CHAPTER 3 TV

In this chapter, we will introduce methods to scan programs, select a TV/Radio program, create a group and so on.

Scanning Channels

If you haven't done channel scanning when you first run the application, please follow the steps to complete this procedure.

--To scan digital channels--

1. Click the **Setup** button  and in the *Setup* dialog box, click **AVerMedia BDA Digital Capture** icon on the left pane.

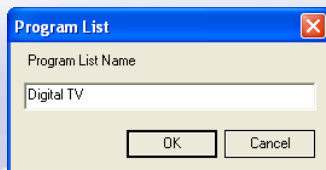
☒ **Note:**

Make sure that your Country/Region is correct.

- a. First, choose **AVerMedia BDA Digital Capture**.
- b. From the Region/Country drop-down list, select your country or region.
- c. Click **Apply** to save the settings.



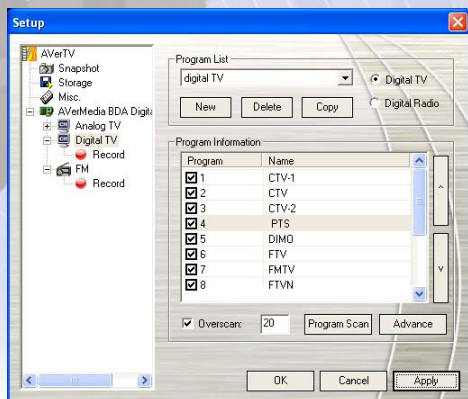
2. Then select **Digital TV**. On this page, select **Digital TV** to scan for digital TV channels or select **Digital Radio** to search for digital radio channels.
3. Click **New** and the *Program List* dialog box will appear. Type in the desirable name and click **OK**.



4. Then click **Program Scan** to start the searching process.

The application comes with a default frequency table therefore the application will use this table to search for active channels/programs. If you want to terminate the searching process, just click **Stop**.

5. You can check the scanning progress from the progress bar. After scanning, the active TV/Radio channels will be listed inside the box. Click **Apply** to save the scanned channels.



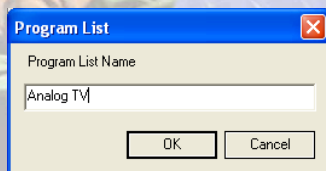
--To scan analog channels--

1. Click the **Setup** button  and in the *Setup* dialog box, click **AVerMedia BDA Digital Capture** icon on the left pane.

☒ **Note:**

Make sure that your Country/Region is correct.

- a. First, choose **AVerMedia BDA Digital Capture**.
 - b. From the Region/Country drop-down list, select your country or region.
 - c. Click **Apply** to save the settings.
2. Then select **Analog TV**. On this page, choose the **Ant.** option to search only for air channel or select **CABLE** to scan for cable channels.
 3. Click **New** and the *Program List* dialog box will appear. Type in the desirable name and click **OK**



4. Then Click **Program Scan** to start the searching process.

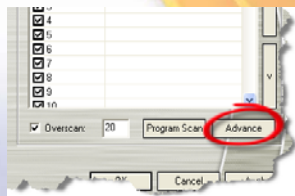
The application comes with a default frequency table therefore the application will use this table to search for active channels/programs. If you want to terminate the searching process, just click **Stop**.

5. You can check the scanning progress from the progress bar. After scanning, the active TV/Radio channels will be listed inside the box. Click **Apply** to save the scanned channels.

Scanning Channels (For Advanced User)

--To scan digital channels--

1. Click **Advance** located at right-lower corner in the **Programs Information** section. Then the *Advance Program Configuration* dialog box will appear.



2. When there are channels missing from the channel memory, select **All Freq.** (All Frequency) or **Single Freq.** (Single Frequency).

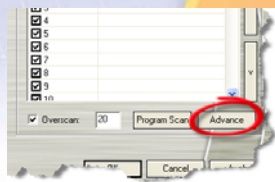
☒ **Note:** All Frequency Scanning may take you a while. Please be patient.

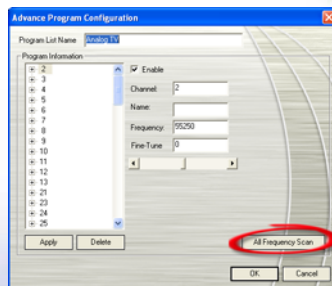
3. Once you select **Single Freq.**, you need to specify the correct **Frequency**, for example 533000 (KHz), and **Bandwidth**.
4. Then click **Scan**.
5. After scanning, new active channels/programs will be memorized and listed in the left pane of the dialog box.
6. Click **Apply** to save the scanned channel.



--To scan analog channels--

1. Click **Advance** located at right-lower corner in the **Programs Information** section. Then the *Advance Program Configuration* dialog box will appear.
2. If you don't want to miss any channels, click **All Frequency Scan**.






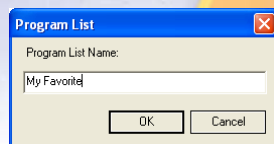
3. When a warning message appears, click **Yes** to continue the procedure or click **No** to abort this operation.
4. After scanning, new active channels/programs will be memorized and listed in the left pane of the dialog box.
5. Click **Apply** to save the scanned channel.

Adding and Deleting Channel Groups

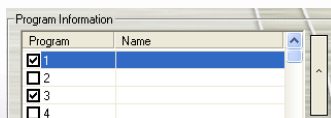
Selecting a Channel Group allows you to switch between the channels of the selected group only when pressing the **Channel Up/Down** button. If you want to add or delete a channel group, do the following:

To add a new channel group:

1. Click the **Setup** button  and in the *Setup* dialog box, click **Analog TV** or **Digital TV** icon on the left pane.
2. Click **New** and the *Program List* dialog box will then appear (as shown at right).
3. Type in a group name and click **OK**.
4. Click **Program Scan** and click **Yes** to continue the scanning process.



5. Available channels will then be listed in the *Program Information* and now you can delete the unwanted programs by clearing the check box.

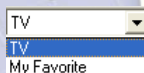


6. Click **Apply** to save the setting and click **OK** to exit the current dialog box. Or you can click **Cancel** to revert to the original setting.


OR,

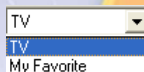
If you don't want to scan programs every time creating a new channel group, you can use **Copy** function.

1. From the program drop-down list, select the group that you want to duplicate.
2. Click **Copy** and the *Program List* dialog box will appear.
3. Type in desired name and click **OK**.
4. Finally, just like the steps described above, clear the check mark next to the unwanted channels.





To delete a channel group:


1. Click the **Setup** button  and in the *Setup* dialog box, click **Analog TV** or **Digital TV** icon on the left pane.
2. From the program drop-down list, select the name of the group that you want to remove.
3. Click **Delete** to remove the selected group.



Selecting a TV/Radio Channel


There are three ways of switching between TV/Radio channels:

- ◆ Click the **Channel Up/Down** buttons ( on the TV monitor window or  on the Control Panel) repeatedly until reaching your desired channel.

- ◆ Click  to open the *Numeric Panel* (as shown at right). Then click on the **Numeric buttons** to get your desired channel number.



OR,

- ◆ Click the **Program List** button . When the Program Panel appears, first choose the desired group from the drop-down list and then double-click on the desired channel.




Adjusting Volume



On the Control Panel, click and drag your mouse over the **Volume** meter to increase or decrease the volume level. You can also press the + / – keys on the numeric keypad to adjust the volume.


Specifying a Channel Name or Description

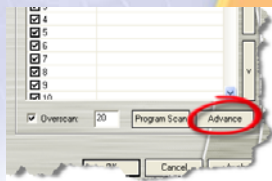
To assign a channel name or specify a description:

1. Click the **Setup** button  and in the *Setup* dialog box, click **Analog TV** or **Digital TV** icon on the left pane.
2. Under the *Name* column, double-click the text box of the channel you want to assign a name or description.
3. Type in the channel name or description, then press **Enter**.

Program	Name
<input checked="" type="checkbox"/> 1	CTS
<input checked="" type="checkbox"/> 2	CTS_Edu
<input checked="" type="checkbox"/> 3	CTS_UNEWS

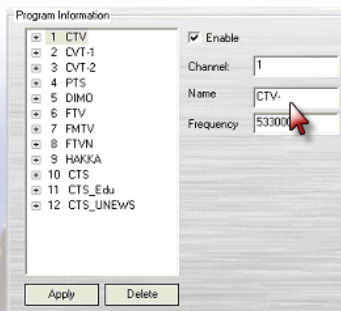
OR,

1. Click the **Setup** button  and in the *Setup* dialog box, click **Analog TV** or **Digital TV** icon on the left pane.
2. Click **Advance** located at right-lower corner in the *Program Information* section. Then the *Advance Program Configuration* dialog box will appear.



3. In the dialog box, select the channel/program you want to assign a name or description.

4. In the *Name* text box, type in the desired name or description. Press **Apply** to save the setting and click **OK** to exit the dialog box. Or you can press **Cancel** to abort the saving.

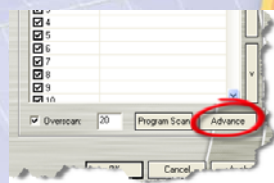


Modifying a program list name

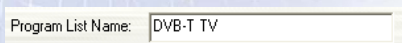
Surely, you can change a program list name. To rename a program list, follow the steps described below:

1. Click the **Setup** button  and in the *Setup* dialog box, click **Analog TV** or **Digital TV** icon on the left pane.

2. Click **Advance** located at right-lower corner in the *Program Information* section. Then the *Advance Program Configuration* dialog box will appear.




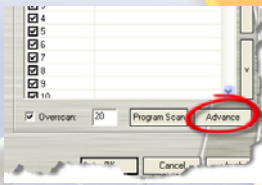
3. Type the desired name in the *Program List Name* text box.

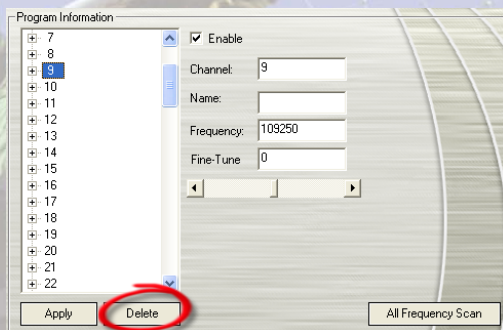


4. Press **Apply** to save the setting and click **OK** to exit the dialog box. Or press **Cancel** to abort the saving.

Removing Unwanted Channels

If you want to exclude undesirable channels from your channel list, do the following:

1. Click the **Setup** button  and in the *Setup* dialog box, click **Analog TV** or **Digital TV** icon on the left pane.
2. Click **Advance** located at right-lower corner in the *Program Information* section. Then the *Advance Program Configuration* dialog box will appear. 
3. In the *Program Information* section, select the unwanted channel and then click **Delete**. This channel will be removed and that means you won't be able to access these programs anymore.



OR,

If you just want to skip the certain channel, do the following:

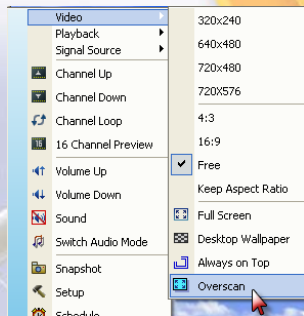
1. First, select the unwanted channel in the **Program Information** section.
2. Clear the *Enable* check box so that you will not access that channel when you press **Channel Up/Down** buttons.

☐ Enable

3. However, you can still see the channel in your program list. If you want to watch that channel again in some day, just select the *Enable* check box.

Using the OverScan Function

On some broadcast channels, you might see distorted lines or black spaces on the top, sides, or bottom of the screen. These video artifacts device from the source signal, and can be masked using the **OverScan** feature.

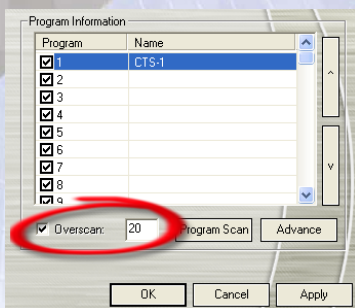


To hide the edges of the picture:



- Right-click on the TV Monitor and choose **OverScan** to have it checked.

OR,

- Click the **Setup** button  and in the *Setup* dialog box, click **Analog TV** or **Digital TV** icon on the left pane. Enable **OverScan** and specify an appropriate number (0~20) to get the better quality.



You can see the difference from the pictures below:

Before using OverScan function	After using OverScan function
	

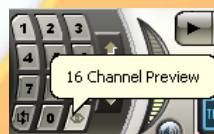
16-Channel Preview



The 16-channel preview function can display 16 TV channels on-screen at the same time. You can see clearly which TV programs are currently showing on these channels.

To preview the channels:

1. Click  to open the Numeric Panel.
2. Click the **16 Channel Preview** button.




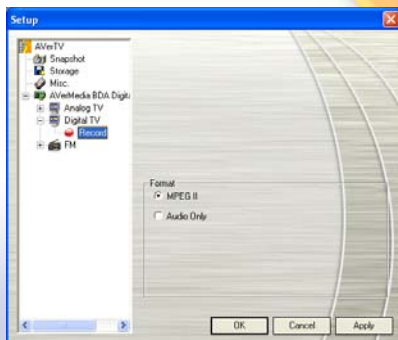
3. The screen will be gradually filled up with 16 TV channels, starting from the currently selected channel.
4. Select a channel and press the numeric button “5” on the remote control to view it only and freeze the other channels. If you want to continue to display other channels just press **C** letter on the keyboard.
5. To display a channel on the TV Monitor window, select any one of the 16 channels on-screen and double-click on that channel, or use the arrow $\uparrow, \downarrow, \leftarrow, \rightarrow$ button of your keyboard and then press **Enter**. You will then be tuned in to that channel.
6. Or, click the right mouse button or press **ESC** to return to the originally selected TV channel.

Customize Video recording Setting


To customize the video recording setting, please do the following.

--Digital TV--


1. Click the **Setup** button  and in the *Setup* dialog box, click **Digital TV** icon on the left pane.
2. Select the **Record** option.
3. Select recording type. By default, the application is set to record both audio and video in *MPEG II* format. Or you can choose *Audio Only* for sound recording.

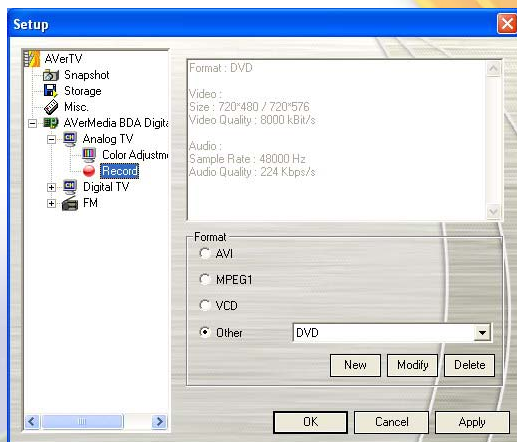


4. Click **Apply** to save the setting and click **OK** to exit the current dialog box. To abort this operation, click **Cancel**.

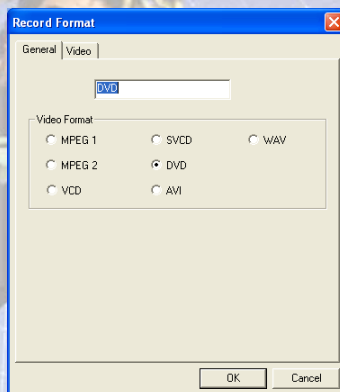
 **Note:** To determine the length of recording and to choose a destination folder in which to save the recorded audio, please refer the section titled **Recording Setting** in Chapter 6.

--Analog TV--

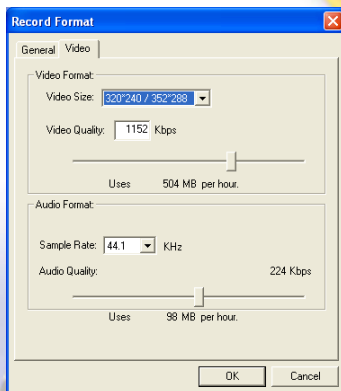
1. Click the **Setup** button  and in the *Setup* dialog box, click **Analog TV** icon on the left pane.
2. Select the **Record** option.
3. Determine the video file format to use for saving the recorded video file.
4. You can use the default format (WAV, AVI, or VCD) or select **Other** to create your own file format.



5. Click **New** and the *Record Format* dialog box appears. In the *General* tab, select the file format you want and enter the desired name in the text box.



6. In the **Video** tab, you can also select the *Video Quality*, *Audio Quality*, *Video Size* or *Sample Rate*.



7. If you want to change the setting of your own file format, click **Modify**. Or click **Delete** to remove the unwanted file format that you created.
8. Click **Apply** to save the setting and click **OK** to exit the current dialog box. To abort this operation, click **Cancel**.

☒ **Note:** To determine the length of recording and to choose a destination folder in which to save the recorded audio, please refer the section titled **Recording Setting** in Chapter 6.


Information:

File Format	Description
MPEG-1	Choose MPEG-1 format for video files that are intended for CD-ROM playback on a computer or for Internet transmission. MPEG-1 allows file compression and offers VHS quality picture. Just about every system available today can play MPEG-1 and does not need special software or hardware.
MPEG-2	Videos compressed using MPEG-2 have extremely high quality pictures and full CD-quality sound. Choose MPEG-2 format for video files that are intended for DVD-ROM playback on a computer or if you want broadcast quality

	videos.
VCD	When you choose this format, the recorded video file will be saved in MPEG-1 format that is compliant with VCD standards. Standard VCD frame size and frame rate are 352 x 240 pixels at 29.97 fps for NTSC and 352 x 288 pixels at 25 fps for PAL.
SVCD	When you choose this format, the recorded video file will be saved in MPEG-2 format that is compliant with SVCD standards. Standard SVCD frame size and frame rate are 480 x 480 pixels at 29.97 fps for NTSC and 480 x 576 at 25 fps for PAL.
DVD	When you choose this format, the recorded video file will be saved in MPEG-2 format that is compliant with DVD standards. Standard DVD frame size and frame rate are 720 x 480 pixels at 29.97 fps for NTSC and 720 x 576 at 25 fps for PAL.
AVI	AVI is the most common video file format for playback on the computer. It can be saved in uncompressed form if you want high quality video, or compressed using any of the available codecs if you want to minimize the file size.
WAV	A common audio file format for Windows computers. It was created by Microsoft and has become a standard PC audio file format.

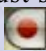

Using the EPG Function


(*This function is **ONLY** available for digital TV)


Electronic Program Guide (EPG) is a service that allows you to check the next succeeding program schedule and even the program schedules of the whole week. If the EPG service is provided in your region/country, simply click the **EPG** button  to have the *EPG* window appeared.

First, select the desired program from the *Program* drop-down list and the *EPG* window will display the schedule for one week. Surely, you can also see the related information such as program name, time, and description about the program on the right pane of the window.



Our *EPG* window also allows you to preset a schedule for watching or recording programs. Just select your favorite programs and click **Record** button  or the **Active TV Application** button . And the system will execute your command on schedule.

If you want to download the latest program schedule, please click the **Update** button .

To exit the *EPG* window, simply click the **OK** button .

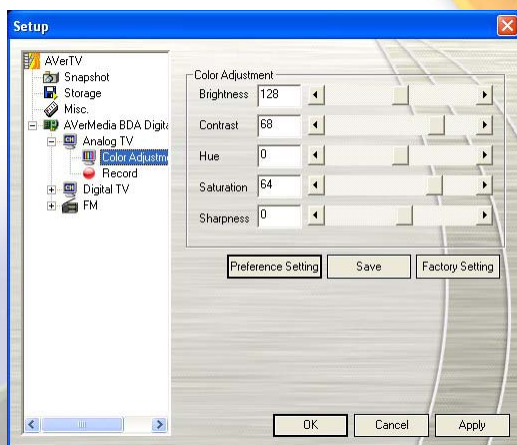
Fine tuning Color and Display Quality

(*This function is ONLY available for analog TV)

If the color or picture quality of the TV display needs to be adjusted, please do the following.

1. Click the **Setup** button  and in the *Setup* dialog box, click **Analog TV** icon on the left pane.

2. Select the **Color Adjustment** option.



3. Then you can adjust the **Brightness**, **Contrast**, **Hue**, **Saturation** and **Sharpness** sliders until you get an accurate color.

Click **Save** to create your own setting. Next time, you can simply click **Preference Setting** to get your preferred setting.

4. If you want to revert to default setting, please click **Factory Setting**.

CHAPTER 4 FM Radio

FM Radio Controls

Click the **FM Radio** button to listen to your favorite radio station programs.

Use the following button controls for selecting FM radio channels, adjusting volume, scanning FM channels, recording radio programs and more.

To change back to live TV, click the **Change Radio Source** button.




How to Auto Scan FM Radio Channels

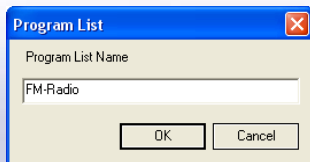
If this is your first time to use FM radio, perform auto scan to search and memorize active FM radio stations in your area.

To auto scan FM radio stations:

1. Click the **Setup** button  and in the *Setup* dialog box, click **AVerMedia BDA Digital Capture** icon on the left pane. Then select **FM**.

2. Click **New** and the *Program List* dialog box will appear. Type in the desirable name and click **OK**.

 **Note:** The system will assign a default name (FM-Radio) if you don't create a new program list before scanning.




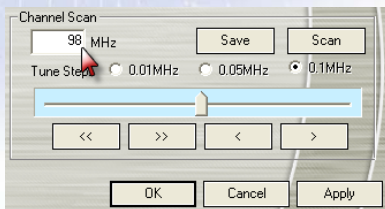
3. Click **Scan**. All active channels will be automatically scanned and memorized.
4. To terminate the scanning, click **Stop**.
5. Click **Apply** to save the setting and click **OK** to exit the current dialog box. To abort the setting, click **Cancel**.





Manually Scanning Specific FM Channels

Instead of scanning all channels, you can choose to manually scan one or a few channels only. To do this, follow these procedures.

To manually rescan specific FM radio channels:


1. Click the **Setup** button  and in the *Setup* dialog box, click **FM** icon on the left pane.
2. Enter the channel frequency that you want to start scanning in the text box.



3. Select 0.01 MHz, 0.05MHz or 0.1MHz as your tuning increment.
4. Click  to scan upward or  to scan downward from the selected channel frequency. The scanning will stop when the application finds the closest ACTIVE FM frequency.
5. Or click  or  to increase/decrease the frequency to search your preferred channel.
6. Click the **Modify** button if you'd like to keep the newly scanned frequency.

Selecting a Channel

To select a channel:

1. Click  to open the *Numeric Panel*.

There are a number of ways to select a channel:


- Click on the **Numeric buttons** to select a channel.
- Click the **Channel Up/Down** button repeatedly until reaching your desired channel.

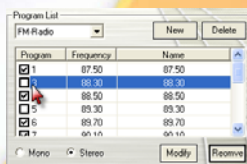
OR,

- Use the **numeric keys** on your keyboard to select a channel.

Skiping Unwanted Channels

If you want to exclude undesirable channels from your FM channel list, do the following:


1. Click the **Setup** button  and in the *Setup* dialog box, click **FM** icon on the left pane.
2. In the *Program* column, click the unwanted channel. The check mark

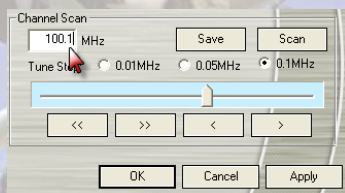


will be removed, indicating that the channel will be excluded from your channel list and that you won't be able to access and hear them through the **Channel Up/Down** button.

Adding a Radio Frequency


If the desired channel cannot be found through scanning, follow the instructions below.

1. Click the **Setup** button  and in the *Setup* dialog box, click **FM** icon on the left pane.
2. Specify the correct frequency in the text box (as shown at right) and click **Save**.



Modifying a Radio Name

You can manually modify any existing FM radio channel.

1. Click the **Setup** button  and in the *Setup* dialog box, click **FM** icon on the left pane.
2. Double click on **Name** column of the existing FM channel which you want to modify.
3. Enter the name or description you want in the provided text box and then press **Enter**.

Program	Frequency	Name
<input checked="" type="checkbox"/> 1	87.50	My Favorite
<input checked="" type="checkbox"/> 3	88.30	88.30
<input checked="" type="checkbox"/> 4	100.10	100.10
<input checked="" type="checkbox"/> 5	88.50	88.50
<input checked="" type="checkbox"/> 6	89.30	89.30


4. To modify more channels, repeat step 2 to 3.

5. Click **Apply** to save the setting and click **OK** to exit the current dialog box.

Setting the Audio Mode

The application will automatically set each FM radio channel to *Mono* or *Stereo* based on the audio mode of the FM radio signals received. You can change the audio mode of a stereo FM radio signal to *Mono* or vice versa.

To change the audio mode:

1. Click the **Setup** button  and in the *Setup* dialog box, click **FM** icon on the left pane.
2. Click on the channel whose audio mode you want to change.
3. Select the **Audio Mode** option you want: **Mono** or **Stereo**.


Audio Mode ☒ Mono ☐ Stereo

Note: If the audio quality of a FM radio channel is found unstable or a bit poor, you can try to switch the audio mode between **Mono** and **Stereo** to get a better audio quality.

Adding and Deleting Channel Groups


Selecting a Channel Group allows you to switch between the channels of the selected group only when pressing the **Channel Up/Down** button. If you want to add or delete an FM channel group, do the following:

To add a new channel group:

1. Click the **Setup** button  and in the *Setup* dialog box, click **FM** icon on the left pane.
2. Click **New** and the *Program List* dialog box appears. Type in a group name and click **OK**.
3. Now you can start to scan FM radio channels and manage the scanned FM data for this new channel group. For more information, refer to [How to Auto Scan FM Radio Channels](#).


4. To add more channel groups, repeat steps 2 to 3.

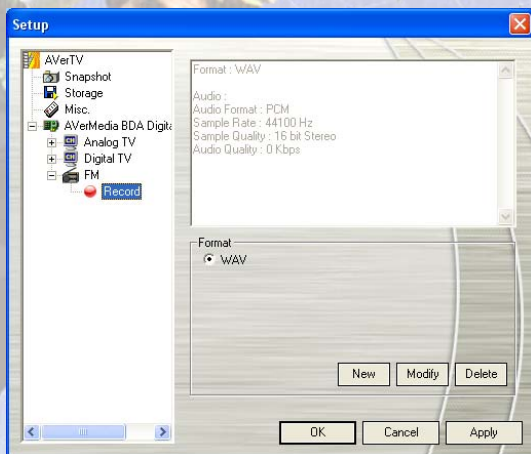
To delete a channel group:

1. Click the **Setup** button  and in the *Setup* dialog box, click **FM** icon on the left pane.
2. From the drop-down list, select the name of the group that you want to remove.
3. Click **Delete** to remove the selected group.

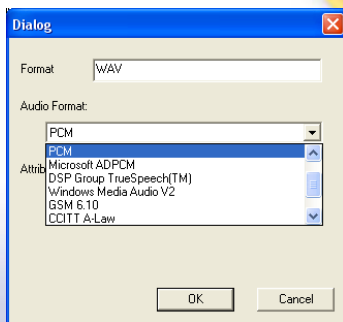
Customizing Audio Recording Settings

To customize audio recording settings:

1. Click the **Setup** button  and in the *Setup* dialog box, click **FM** icon on the left pane.
2. Then select **Record**. The system is set to **WAV** as your default audio file format. Or, you can click **New** to create your own file format.



3. In the dialog box, select the audio file format from the *Audio Format* drop-down list.



4. Enter the desired format name or description in the *Format* text box.
5. Click **OK**.
6. If you want to change the setting of your own file format, click **Modify** or you can click **Delete** to remove the unwanted file format that you created earlier.
7. Click **Apply** to save the setting and click **OK** to exit the current dialog box. To abort this operation, click **Cancel**.

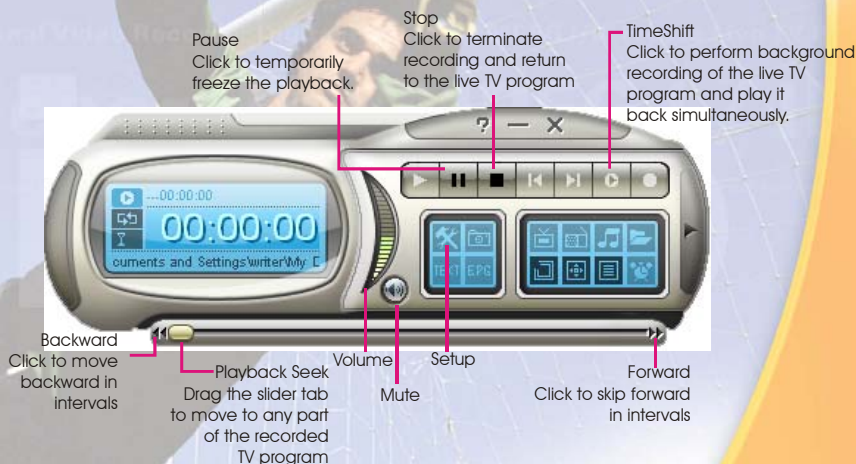
☒ **Note:** To determine the length of recording and to choose a destination folder in which to save the recorded audio, please refer the section titled *Recording Setting* in Chapter 6.

CHAPTER 5 TimeShift

The TimeShift function performs background recording of a TV program, and lets you return and watch any part of the recorded program. At the same time, the live TV program continues to be recorded and played back so you won't miss any part of the show. You can also advance forward to skip commercials or rewind to replay scenes one more time.

TimeShift Controls


Use the following button controls in the Control Panel to start recording a live TV program, play back the program from where you left off, advance forward, rewind, and more.

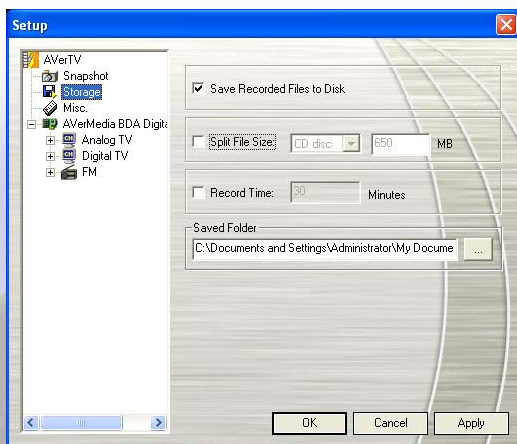



Customizing TimeShift Settings

Before you start using the TimeShift function, first check its recording settings to see if they fit your needs.

To check and customize settings:

1. Click the **Setup** button  and in the *Setup* dialog box, click the **Storage** icon on the left pane. You will then see the following settings.



2. By default, TimeShift performs recording of the TV program by creating a temporary video file and deletes this file once you click the **Stop** button. If you want to save the video file, select the **Save Recorded File to Disk** check box.
3. Click  to choose a folder in which to save the video files.
4. Click **Apply** to save the new settings and click **OK** to exit the current dialog box. Or, click **Cancel** to use the original settings.


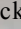


Using the TimeShift Function

To pause the live TV program:

1. Click the **TimeShift** button  on the Control Panel. The application will begin to record the TV program.

2. When you want to rewind, use the **Playback Seek** slider bar to move back to the part you want to watch again. Click and drag the slider tab to the left until you see the part of the show you wish to watch, then release the mouse button.



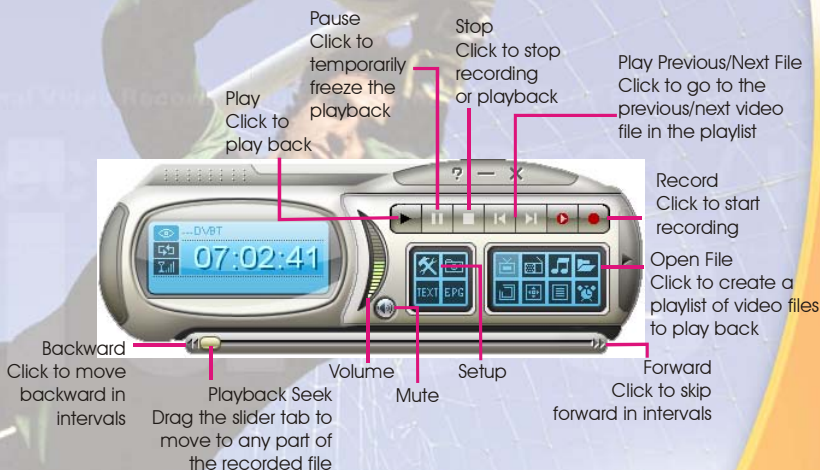
3. You can also click the **Backward** button  to move backward in fixed intervals until you reach the part where you left off.
4. To advance forward and skip some parts of the recording (for example TV commercials), drag the slider tab to the right. You can also click the **Forward** button  to move forward in fixed intervals.
5. To temporarily pause the playback, click the **Pause** button . Click the **Play** button to resume.
6. To return to real-time viewing of the live TV program, click the **Stop** button . This switches off the Time Shift function and returns you to live TV.

CHAPTER 6 DVR

You can use your computer as a digital video recorder, and record your favorite TV programs or capture video from an external source into your hard drive. Besides, you can also divide the recording files in proper sizes to facilitate burning onto removable optical media, such as CD-R and DVD discs.

DVR Controls



Use the following button controls for recording and video playback.



Recording Settings



Before recording, check if the settings meet your needs.

1. Click the **Setup** button . In the *Setup* dialog box, click the **Storage** icon on the left pane.

2. This application lets you to divide the recording files in parts for burning onto removable optical media, such as CD-R (650 MB) and DVD (4096 MB) discs. Enable the *Spilt File Size* option and select the appropriate video file size from the drop-down list so that each video file will not exceed the limit. Or you can choose **Custom** to assign the file size you want.
3. The *Record Time* option allows you to specify a recording duration otherwise the system will record the largest clip that your hard drive can accommodate.
4. Determine the destination folder. Click  to choose a folder you want.
5. To hide the sound of the TV program when recording, click the Mute button  on the Control Panel.
6. Click **Apply** to save the setting and click **OK** to exit the current dialog box. To abort this operation, click **Cancel**.
7. To determine the file format, please refer to the section titled *Customizing Video Recording Setting in chapter 3* or *Customizing Audio Recording Setting in chapter 4*.

Using the Recording Function

To record a TV/Radio program that you want, do the following:

1. Click the **Record** button  on the Control Panel.
2. You can click the **Stop** button  to terminate the recording and return to live TV program.


Playing the Recorded Programs

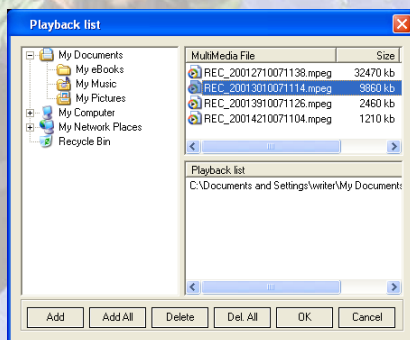
Each TV program that you recorded will be saved as a video file in the assigned destination folder.

To play back the recorded video files:

Click the **Play** button  to play back.

OR,

- (1) Click the **Open File** button , and you may see some recorded video files are listed at the right top pane of the *Playback List* window.
- (2) To add more video files to the playback list, first navigate the *file* on the left pane to find the folder that contains the desired video files. When you have located the folder, the media files will then be displayed on the right top pane. Select the files that you want, then click **Add**, or click **Add All** to add all media files in the folder to the playback list.
- (3) To delete files from the *Playback List*, select them from the list in the right bottom pane and click **Delete**, or click **Del. All** (Delete all) to delete all files in the playback list.


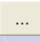


CHAPTER 7 IMAGE CAPTURE


While you watch digital TV or recorded video from your PC monitor, you can use the **AVerMedia Hybrid + FM Cardbus** application to capture images for your document, presentation or web page.

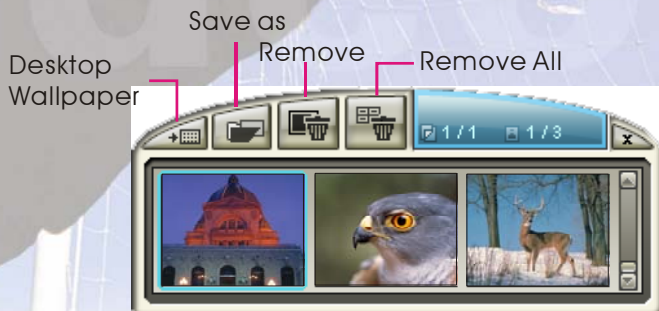
Before Capturing

Before you start capturing images, first set the destination folder for saving captured images.

Click the **Setup** button , and select the **Snapshot** icon on the left pane. (See Page 48 for more details) Then click  to choose a folder where you want to save captured images.

Capturing a TV/ Video Image


 To capture a still image, click the **Snapshot** button on the Control Panel. The *Album* will then appear, displaying thumbnails of the captured image.




To capture another image, click **Snapshot** button on the Control Panel again. New thumbnails will be added to the *Album* as you capture more images.

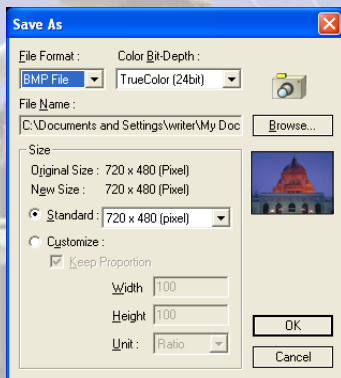
By double-clicking on the thumbnails, you can view images in a full-screen window with default image viewer.

To display the captured image as your desktop wallpaper :

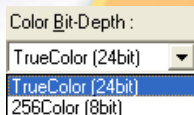
1. Select the thumbnail of the desired image and then click the **Desktop Wallpaper** button .
2. The selected image will be displayed as your wallpaper, the background of your desktop.

To save the captured image:

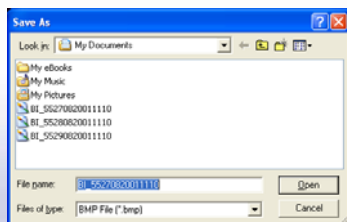
1. Select the thumbnail of the image and then click the **Save As** button . The *Save As* dialog box will then appear.



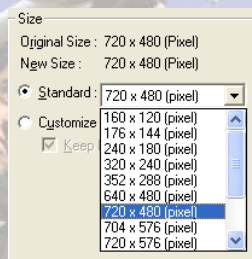
2. From the *File Format* drop-down menu, select the format for saving the captured image.
3. Choose the *Color* format.
 - Choose 24-bit to capture image in 16M colors.
 - Choose 8-bit to capture image in 256 colors.



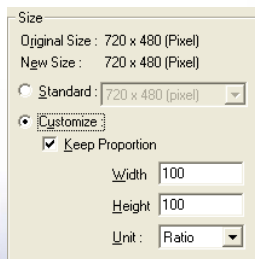
- Click **Browse** to scan for folders and select a destination location for saving the image. Then specify a file name for saving the captured image.



- Choose the image size.
 - In the *Size* section, select the **Standard** option and choose a desirable image size from the drop-down list.



- If you want to set your own image size, select **Customize** and enter the image **Width** and **Height**. If you want to maintain relative width and height, select the **Keep Proportion** option. Choose a measurement unit from the **Unit** drop-down list. You can specify any image size you want. The maximum capture size can be 1600×1200.

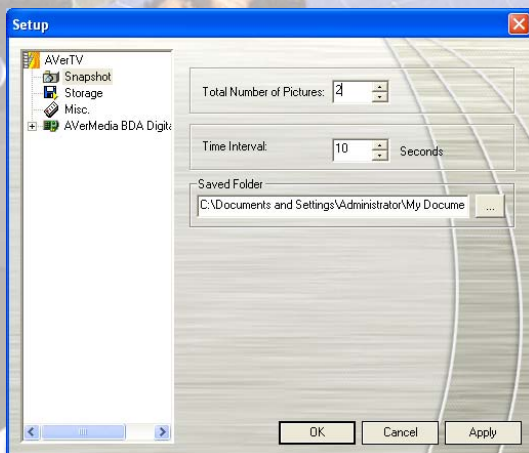


6. Click **OK** to save the image. Click **Cancel** if you do not want to save the image.


Multiple Image Sequence Capture

To capture a continuous sequence of images, do the following:

1. Click the **Setup** button . In the Setup dialog box, click the **Snapshot** icon on the left pane.



2. In the *Total Number of Pictures* box, specify the number of images you want to capture.


3. In the *Time Interval* box, specify the interval between captures. For instance, if you specify 10 seconds, an image will be captured every 10 seconds.
4. Click **Apply** to save the new settings and click **OK** to exit the current dialog box. Or Click **Cancel** if you do not want to change the settings.
5. Click the **Snapshot** button  on the Control Panel to start capturing.

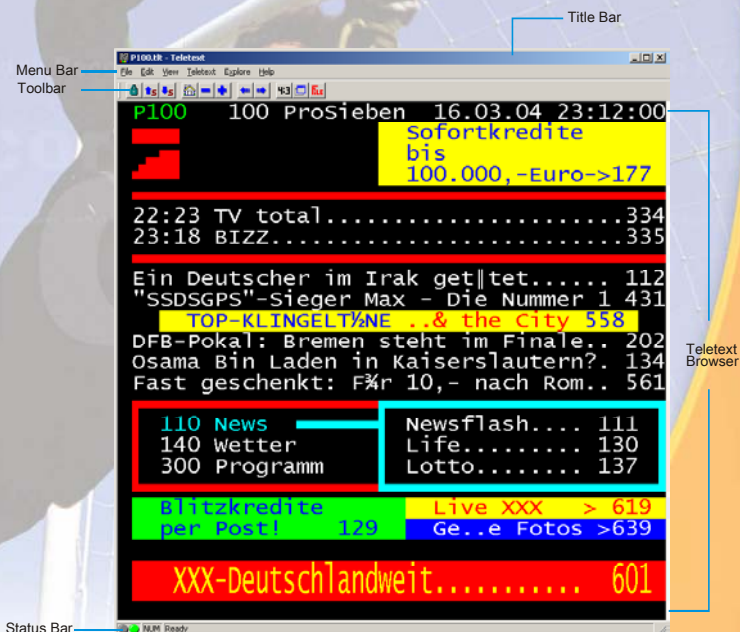


CHAPTER 8 TELETEXT

Teletext makes TV viewing a unique experience. It views teletext broadcast from your television programs and get the most updated information on TV Schedules, News, Stock Market Prices, Concert & Theatre information and so on. Teletext information may not be available if there is no such service provided in your region or country.

Overview

Click the **Teletext** button  to evoke the Teletext application as shown below.



Title Bar

This is located at the top of the window. It contains the current displayed page number or in hexadecimal page number of an active window.

Menu Bar

This contains the names of the available drop-down list option menus. To access any of the menu items, simply click on it or hold down Alt and press the first character of each item.

Toolbar

It includes buttons that gives quick access to perform certain frequently used functions from the **Menu Bar**.

Teletext Browser

Teletext information is displayed in this area. The information would be the TV schedules, news, stock market reports, concert & theater information and so on.

Status Bar

Status bar is located at the lower left corner of the window. It contains a short text message or explanation of the currently selected menu command.

Toolbar Buttons



Lock Sub page

Locks the current sub page. The upcoming transmitted sub pages will be stored in the Teletext Cache for later use.



Previous Sub page/ Next Sub page

Switches to the next or the previous sub page.



Home (Ctrl+H)

Connects to the teletext home page which always goes to page 100, but page 100 may not be the primary teletext source.



Previous Page (-) / Next Page (+)

Displays the preceding or the succeeding teletext in hexadecimal page number.



History Back / History Forward

Retrieves the previous page in the history list.

Moves a page forward in the history list. The command is usable after one or more back steps in the history list.



TV Scale

Changes the proportion of the Teletext window to 4 by 3.



Always On Top

Makes Teletext Window float over the top of other applications.



Teletext File

Switches between the Teletext file which is opened from the previously saved file and the most recent Teletext information.

LED Lamp

Different LED color indicates different state.

Left LED Lamp:

Gray -- The system does not receive the teletext broadcast data.

Green -- The system is receiving the teletext broadcast data.

Right LED Lamp:

Green -- The cache in Teletext application is running less than 90% usage.

Yellow -- The cache in Teletext application is running over 90% usage.

Red -- The cache in Teletext application is running out.

Using Teletext

The following briefly describes how to use the Teletext feature.

Teletext Page

There are two page numbers displayed on the first line of each teletext page. The page number on the left is the page number that you have selected or keyed in. The other one in the middle of line is the page number of the currently displayed teletext data.

The newly selected page number will appear on the upper left corner of the page. Sometimes, this may take a while to retrieve the newly selected teletext page. There will be no changes on the page when there is no page data transmitted with the number you have selected.

A teletext page can be selected with one of the following methods:

- Key in the hexadecimal or teletext page number using the numeric buttons of your keyboard or AVerMedia TV remote control.
- Press the + (positive) or – (negative) button to move to the succeeding or preceding teletext page.

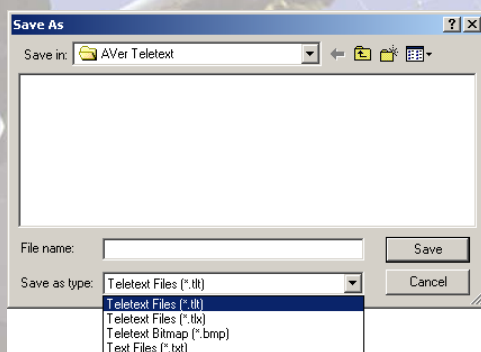
Copying a Teletext Page

1. Simply click and drag over the text or the area that you want to copy using the mouse.
2. Choose **Copy** from the **Edit** menu (*Alt+E, C*) or press *Ctrl+C*.
3. You can then paste the contents of the teletext page in TXT or BMP format to a document you are working with.

Saving a Teletext Page

Some teletext pages include a number of subpages. If the file has subpages, teletext will also save the existing subpages.

1. A teletext page can be saved using one of the following ways:
 - To automatically save the file using the displayed teletext page as the filename and the default file format, choose **Save** from the **File** menu or press *Ctrl+S*.
 - To save the file by specifying your own filename and different file format, choose **Save As** from the **File** menu or press *Ctrl+A*.
2. A save as dialog box will appear:



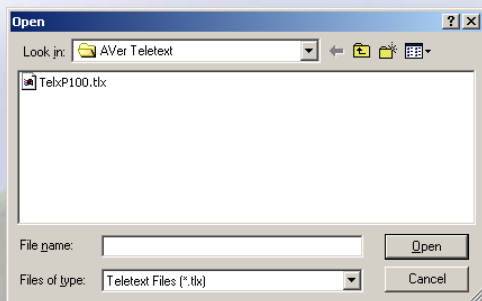
3. Select the file format to use for saving the teletext page. You can save the teletext page in :

TXT	Text file format
BMP	Windows bitmap file format
TLT	Teletext file format
TLX	Teletext file format

4. Enter a filename and click OK.

Opening a Teletext Page

1. Choose **Open** from the **File** menu or press *Ctrl+O*.
2. From the Open dialog box, select the file containing the teletext page you want and click **OK**.



Opening Another Teletext Window


To open another teletext window, choose **New Window** from the **File** menu or press *Ctrl+W*.

Closing the Active Teletext Window

Choose **Close Window** from the **File** menu or press *Ctrl+L* to close the active teletext page window.

CHAPTER 9 Schedule

The **Schedule** allows you to create a list of preset schedules for watching and recording your favorite TV/Radio programs. You can set the day and time to turn on the TV/Radio program and specify the length of recording.

To run this application, click the **Schedule** button  on the Control Panel. Then the Schedule dialog box will appear.



The check box next to the **Action** column (as shown at right) indicates the schedule is executed or will be executed at a preset time. Once the application completes a scheduled task, the system will clear the check mark automatically.

	Action
<input checked="" type="checkbox"/>	Silent Record
<input checked="" type="checkbox"/>	Active
<input checked="" type="checkbox"/>	Active

Schedule Management

This displays a list of preset schedules you have created.

Modify



Select a preset schedule and click this button to make changes.

Delete



Click this to delete selected / all schedules.


Exit

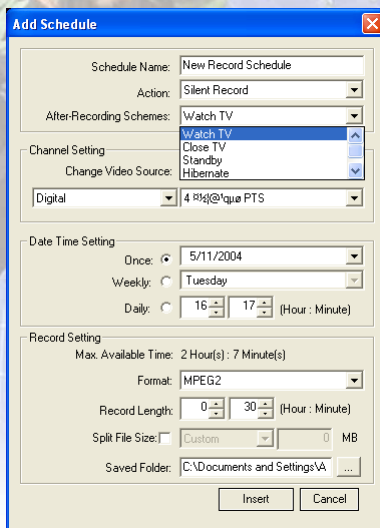


Click this to exit Schedule.

Adding Schedules

To create a new schedule:

1. Click the **Add** button .
2. The following dialog box will then appear:



Add Schedule

Schedule Name: New Record Schedule

Action: Silent Record

Alter-Recording Schemes: Watch TV

Channel Setting: Watch TV

Change Video Source: Close TV

Digital: Digital

4 R/s@que PTS

Date Time Setting

Once: 5/11/2004

Weekly: Tuesday

Daily: 16 : 17 (Hour : Minute)

Record Setting

Max. Available Time: 2 Hour(s) : 7 Minute(s)

Format: MPEG2



Record Length: 0 : 30 (Hour : Minute)

Split File Size: Custom MB

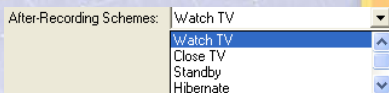
Saved Folder: C:\Documents and Settings\VA

Insert Cancel



3. Type the desired name in the *Schedule Name* text box.
4. From the *Action* drop-down list, select **Active TV Application** to watch a TV program or listen to a radio broadcast. Otherwise, select **General Record** to save a TV/Radio program for future viewing/listening. You can also select **Silent Record** which means the system will perform background recording instead of activating the TV/Radio program.

 **Note:** If you select **Silent Record**, when the application is performing the recording task, the icon  will appear on the task bar (the lower right corner of the screen). To immediately watch or listen to the TV/FM program which is being recorded, just double-click this icon.

5. In the *After-Recording Schemes*, it automatically switches to the selected power control mode when the schedule recording is completed. Choose an appropriate power control status listed below:

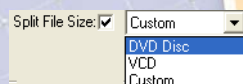


- Watch TV: Switch to real-time TV mode.
- Close TV: Turn off the AVerTV Application.
- Stand by: Turn off your monitor and hard disks.
- Hibernate: Save everything and then turn off your computer.
- Shut Down PC: Turn off your computer.

 **Note:** If you choose **Watch TV** from the drop-down list, after completing the **Silent Record** task, the icon  will appear on the task bar (the lower right corner of the screen). Just double-click this icon, you can immediately watch live TV or listen to the radio.

6. In the *Channel Setting* section, select the video source, group and channel you want.

7. Set the schedule to tune in live TV or to perform recording. You can set the schedule on **Once**, **Daily** or **Weekly**.
- Choose **Once** to perform schedule at a preset day and a preset time.
 - Choose **Weekly** to perform schedule every week, at a preset day and time.
 - Choose **Daily** to perform schedule everyday at a preset time.
8. If you set a schedule for recording, you need to decide the file format and to specify the length of recording and the destination folder where to save the recorded file. If you intend to burn the recorded files onto VCD or DVD discs, enable the *Split* check box and choose the file size to fit the target disc capacity. Or you can choose **Custom** from the drop-down list to specify the file size you want.
9. Click **Insert** to save the new schedule or click **Cancel** to abort the saving.



CHAPTER 10 Hot Keys

Hot Key	Description	Function
UP/DOWN ARROW	Channel or Frequency Up/Down	Press to go to the next upper/lower TV/Radio channel.
L	Channel Loop	Press to go to the previously accessed TV/Radio channel.
NUMERIC KEYS	Select Channel	Use NUMERIC KEYS to directly enter the TV/Radio channel number.
ESC	Stop or, Change back to Normal View	Stop (playback, recording, Time Shift, or 16-channel preview). Or change full screen back to normal view.
F1	Help	Open the Use's Manual.
F5	Full Screen	Show TV/Video in full screen.
F6	Display (OSD) information	Display information on the TV monitor.
F8	16 Channel Preview	Press to perform 16 Channel Preview function.
+/- (on your numeric keypad)	Volume	Press to increase or decrease the volume level.

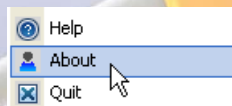
Hot Key	Description	Function
LEFT/ RIGHT ARROW	Rewind/ Fast Forward	Press to rewind or fast forward (for playback and Time Shift).
A	Audio Mode	Choose between available languages.
D	Show/Hide TV Monitor Panel	Toggles between showing and hiding the panel on the TV monitor window.
M	Mute	Turn off/on the sound.
Ctrl + N	Play Next File	Play the next file in the playlist.
Ctrl + P	Play Previous File	Play the previous file in the playlist.
Ctrl + R	Record	Start recording.
P	Play / Pause	Play/pause (for playback, recording, and Time Shift).
S	Snapshot	Capture an image (or a continuous sequence of images).
Ctrl + T	Time Shift	Enable the TimeShift function.

CHAPTER 11 CUSTOMER SERVICE

The AVerTV application provides a convenient tool, which allows users to contact AVerMedia's customer service department easily via e-mail.

To contact the customer service:

1. Right-click on the TV monitor window. When a menu list pop-up, choose **About** (as shown at right).



2. When an information dialog box appears, select the office in your area from the drop-down list.



3. Click the **OK** button  to exit the current dialog box.

www.avermedia.com